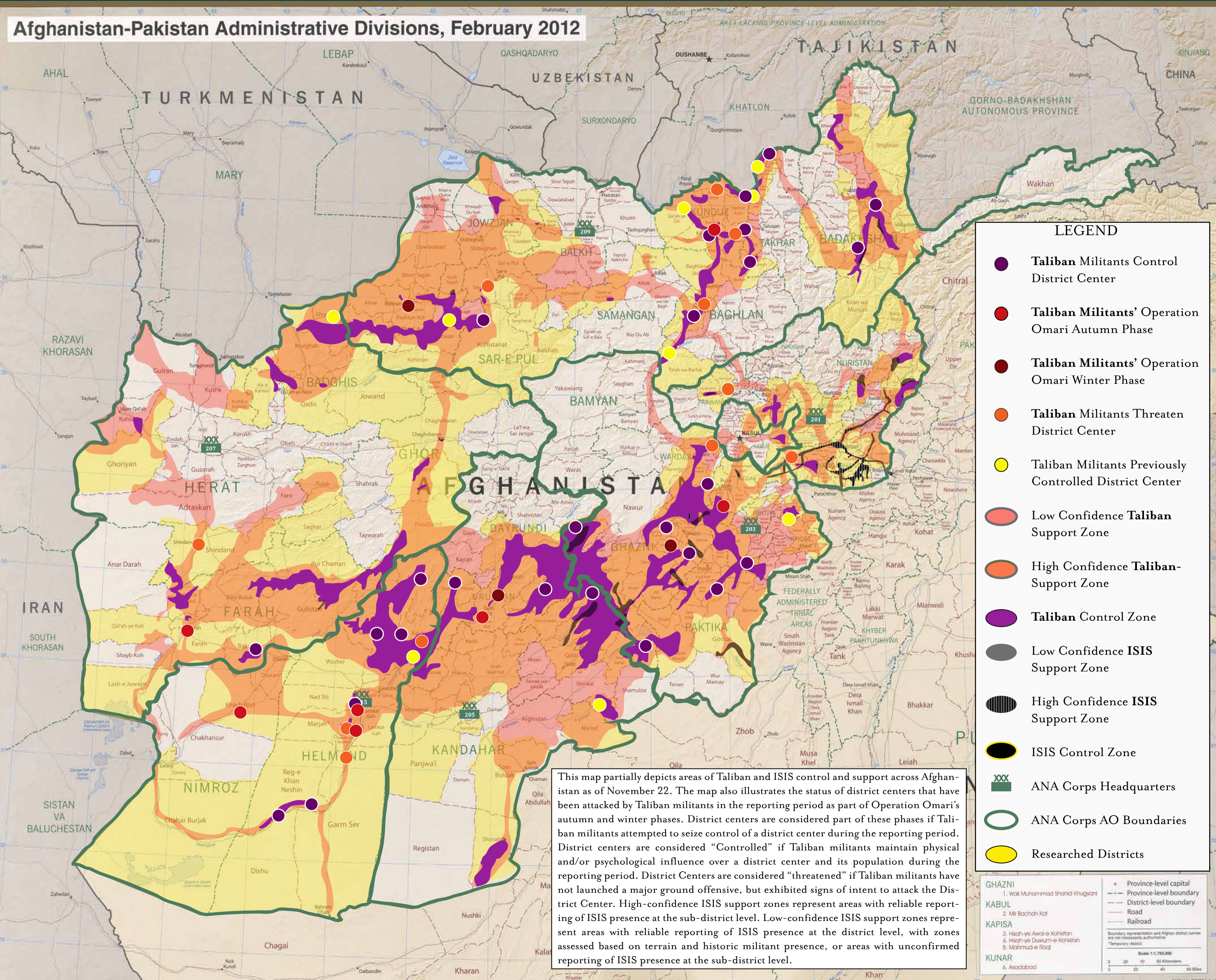


**Afghanistan-Pakistan Administrative Divisions, February 2012**



This map partially depicts areas of Taliban and ISIS control and support across Afghanistan as of November 22. The map also illustrates the status of district centers that have been attacked by Taliban militants in the reporting period as part of Operation Omari's autumn and winter phases. District centers are considered part of these phases if Taliban militants attempted to seize control of a district center during the reporting period. District centers are considered "Controlled" if Taliban militants maintain physical and/or psychological influence over a district center and its population during the reporting period. District Centers are considered "threatened" if Taliban militants have not launched a major ground offensive, but exhibited signs of intent to attack the District Center. High-confidence ISIS support zones represent areas with reliable reporting of ISIS presence at the sub-district level. Low-confidence ISIS support zones represent areas with reliable reporting of ISIS presence at the district level, with zones assessed based on terrain and historic militant presence, or areas with unconfirmed reporting of ISIS presence at the sub-district level.